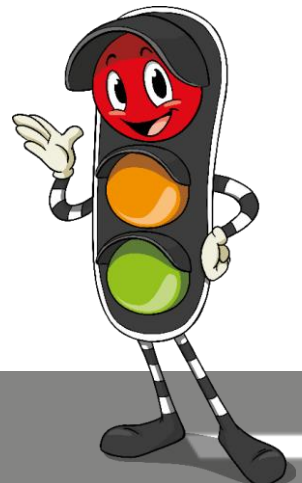


Tafel van 4

Print op dik papier, lamineer en knip uit!

begin →	$1 \times 4 =$	4	$4 \times 4 =$
16	$9 \times 4 =$	36	$7 \times 4 =$
28	$8 \times 4 =$	32	$6 \times 4 =$
24	$5 \times 4 =$	20	$2 \times 4 =$



8	3 x 4 =	12	10 x 4 =
40	klaar!		

